



Elma Dry

Drying units



Order numbers and list prices

Elma Dry	30	120	300
Order number 220 - 240 V~	1082175	1078542	1078575
Order number 115 - 120 V~	1082662	1082664	1082666
List price	390,00 €	550,00 €	990,00 €

Scope of delivery

▪ Cover
▪ Operating manual
▪ Power cable with rubber connector (2 m length)

All prices ex works, excluding packaging.
Technical specifications serve as orientation values and are subject to tolerances due to production and manufacturing. Proper operation can only be guaranteed when using original Elma accessories.

Elma Schmidbauer GmbH · Gottlieb-Daimler-Str. 17 · 78224 Singen (Germany) · Tel. +49 7731 882-0 · Fax +49 7731 882-266 · www.elma-ultrasonic.com

Elma Dry

Product features and functions

▪ From Elma Dry 120 suitable for the use of different basket sizes
▪ The baskets of the ultrasonic unit also serve as drying baskets due to the compatibility
▪ Simple and quick operation via a toggle switch with three positions: Off, warm air, cold air
▪ Drying temperature max. 70 °C
▪ Cooling temperature to room temperature
▪ Cover to save energy and to create an effective flow turbulence around the material to be dried
▪ Automatic safety shutdown if temperature is too high
▪ Silicone mat (perforated) prevents scratching of the drying material. Is placed directly on the bottom of the basket or tub
▪ Dust filter (replaceable) prevents dust from the room air from re-contaminating the material to be dried (filter fineness 33ppi)
▪ Stainless steel housing, drip-proof

Elma Dry

Technical Data - Mechanics

Elma Dry	30	120	300
Unit ext. dimensions W / D / H (mm)	300 / 186 / 219	362 / 285 / 322	568 / 347 / 322
Tank int. dimensions W ₁ / D ₁ / H ₁ (mm)	220 / 120 / 95	275 / 215 / 195	475 / 270 / 195
Opening dimensions W ₂ / D ₂ (mm)	235 / 135	295 / 235	500 / 395
Mesh size Y x Z (mm)	2 x 0,63		
Weight incl. cover (kg)	3,6	6,1	10,2
Load max. (kg)	1	7	12
Suitable basket sizes			
Elmasonic S, P, Med, Select, Easy	1 x 30/40	2 x 30/40 1 x 100/120	3 x 60 1 x 60 + 1 x 100/120 2 x 100/120 1 x 150/300
Elmasonic xtra TT	--	2 x 30 1 x 60	1 x 30 1 x 60 1 x 120 1 x 200
xtra 30, 50, 70, 150	--	1 x 30 1 x 50	3 x 30 1 x 70 1 x 150

Technical specifications serve as orientation values and are subject to tolerances due to production and manufacturing. Proper operation can only be guaranteed when using original Elma accessories.

Elma Dry

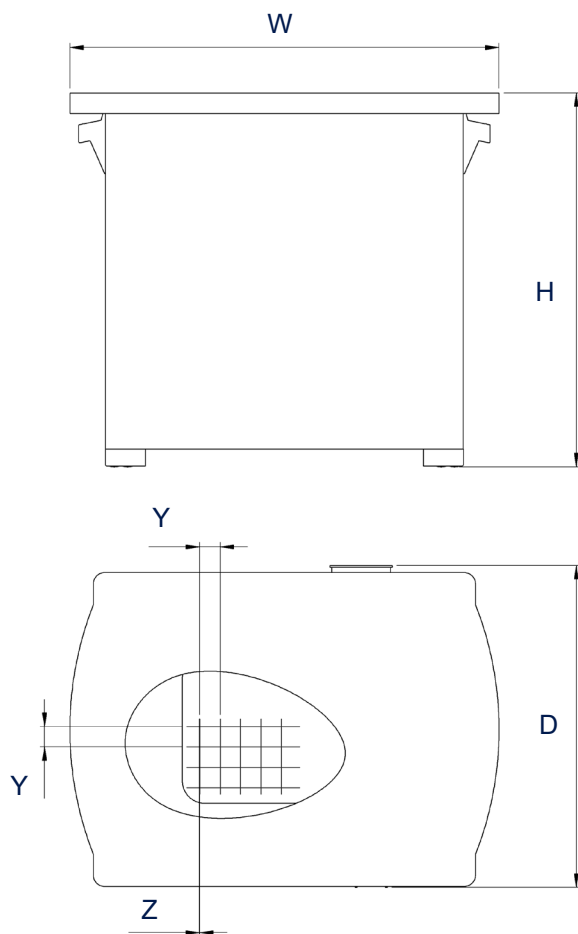
Technical Data - Electronics

Elma Dry	30	120	300
Mains voltage (V~)	220 - 240 / 115 - 120		
Mains frequency (Hz)	50 / 60		
Heating power (W)	480	550	1100
Power (W)	500	570	1140
Temperature max. (°C)	70		
Heating time (min)	~ 15		
Air output max. (m³/h)	160		320

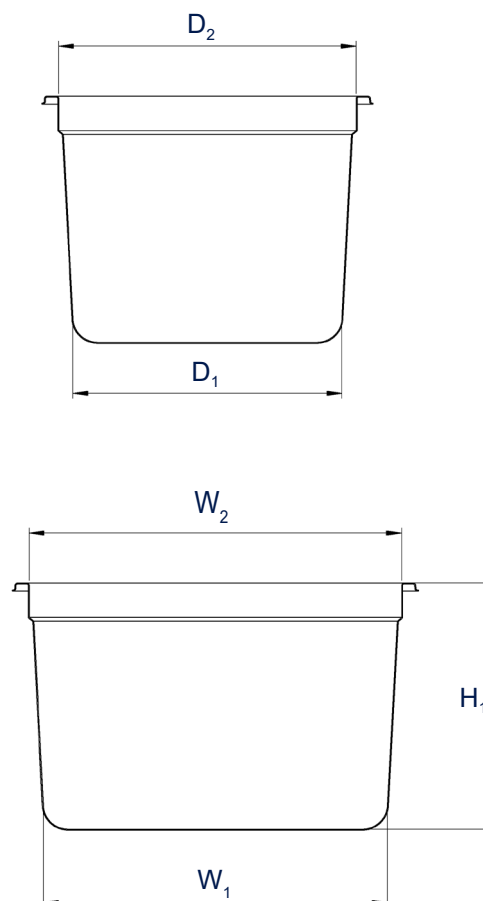
Elma Dry

Dimension definition

Unit outer dimensions



Tank internal dimensions



The drawings are meant as a visualization aid and are not true to scale.

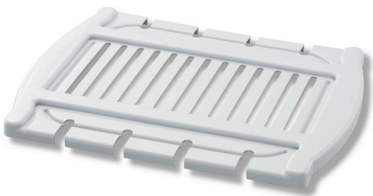
Technical specifications serve as orientation values and are subject to tolerances due to production and manufacturing. Proper operation can only be guaranteed when using original Elma accessories.



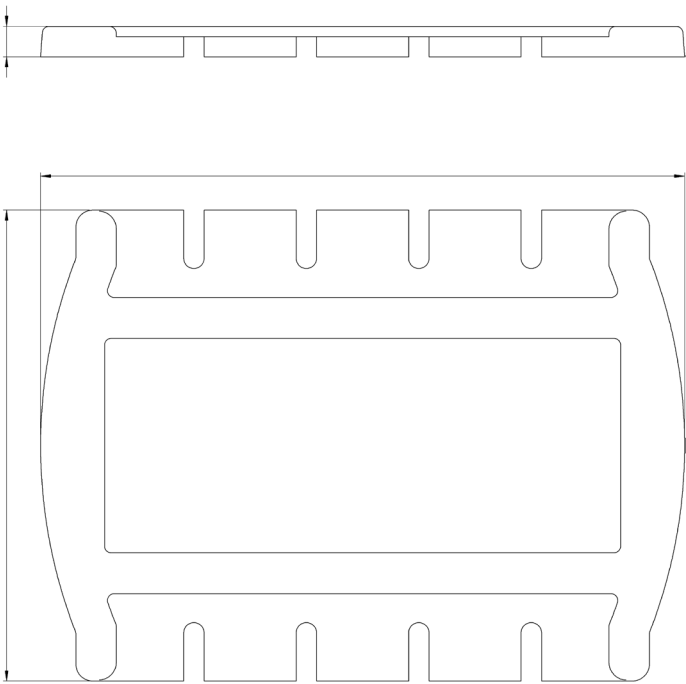
Elma Dry Accessories - Covers

made of plastic

- reduce the noise of the ultrasonic cleaning
- save energy and costs by reducing waste heat and collecting / recirculating the water vapour



Elma Dry	30	120	300
Order number	1082308	1080006	1082116
List price	31,00 €	45,00 €	77,00 €
External dimensions W / D / H (mm)	305 / 175 / 20	295 / 280 / 20	575 / 335 / 20



All prices ex works, excluding packaging.
The drawings are meant as a visualization aid and are not true to scale.
Technical specifications serve as orientation values and are subject to tolerances due to production and manufacturing. Proper operation can only be guaranteed when using original Elma Units.