

Product Information and Prices



Elmasolvex VA

Ultrasonic cleaning devices



Order numbers and list prices

Elmasolvex	VA
Order number 230 V~	1038651
Order number 115 V~	1052330
Order number 100 V~	1052331
List price	15.800,00 €

Scope of delivery

▪ Basket holder Ø 80 mm, USB cable for software updates
▪ Operating manual
▪ Power cable
▪ Connection set exhaust hoses + Allen key to assemble the set.
▪ 4 spare suction filters for media container, funnel; 2 plastic plugs, Allen key for guard grille mounting

All prices ex works, excluding packaging.
Technical specifications serve as orientation values and are subject to tolerances due to production and manufacturing. Proper operation can only be guaranteed when using original Elma accessories.
Elma Schmidbauer GmbH · Gottlieb-Daimler-Str. 17 · 78224 Singen (Germany) · Tel. +49 7731 882-0 · Fax +49 7731 882-266 · www.elma-ultrasonic.com

Elmasolvex VA

Product features and functions

▪ Explosion-proof certified solvent-based movement cleaning (TÜV Rheinland)
▪ Protection from solvent vapors and odors by exhaust or self-contained filter system
▪ Vacuum technology reaches even hard-to-reach places and removes air bubbles from the movements
▪ Cleaning and rinsing with multifrequency ultrasound in rotation or oscillation mode
▪ Machine completely rotatable, thus media container and connections very easy to reach
▪ Media container easy to change, easy to rinse out; integrated particle filter to extend the service life of the cleaning and rinsing solutions
▪ Extensive and practical accessories see accessories catalog
▪ Maximum cleanliness through removal of disturbing air bubbles by ultrasound
▪ Explosion protection through explosion protection measures integrated in the machine
▪ Ultrasonic / vacuum process for solvents in rotary or oscillating mode
▪ Solvent cleaning: Ex-safety certified for flammable solvents with flash point > 12 °C; e.g. elma wf pro, 3 x elma suprol pro, drying
▪ USB interface for updates (Software update / Software Elmasolvex VA Tools)
▪ 3 predefined cleaning programs: Standard, Short, Intensive
▪ 4 Predefined programs for special cleaning: Standard Drying, Movement holder V2 Prg., Epilamisation_Episurf, After Drying
▪ Freely programmable

Elmasolvex VA

Technical Data - Mechanics

Elmasolvex	VA
Unit ext. dimensions W / D / H (mm)	605 / 580 / 610
Weight incl. media tank (kg)	39
Number of media tank	4
Volume of the media tank (l)	2,5
Exhaust air connections (passive)	2 x DN6

Elmasolvex VA

Technical Data - Electronics

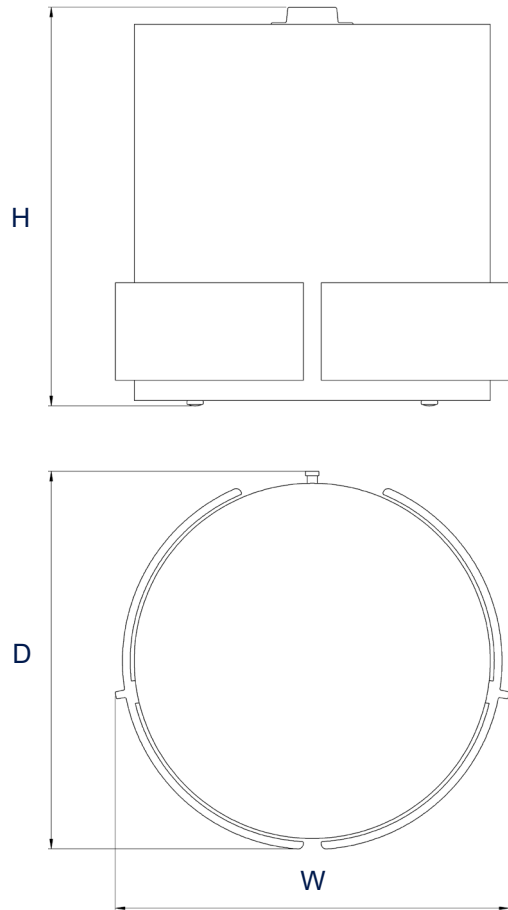
Elmasolvex	VA
Mains voltage (V~)	100 / 115 / 230
Mains frequency (Hz)	50 / 60
Power consumption total (W)	220
Effective ultrasound power (W), can be regulated 30% - 100%	50
Power consumption in standby (W)	20
Mains input fuse (see rating plate)	2 x T4A / 250
Mains cable cross section (mm ²)	3 x 1,0
Switchable ultrasound frequencies (kHz)	40 / 80
Spinning mode speed range freely adjustable up to max. (rpm)	1400
Cleaning / rinsing mode rotation speed range (rpm)	1-20
Oscillation / vibration frequency rate (1/s)	1-14
Oscillation / vibration mode deflection (°)	1-60
Operation sound pressure level (LpAU)	< 70 dB

Technical specifications serve as orientation values and are subject to tolerances due to production and manufacturing. Proper operation can only be guaranteed when using original Elma accessories.

Elmasolvex VA

Dimension definition

Unit outer dimensions



The drawings are meant as a visualization aid and are not true to scale.

Technical specifications serve as orientation values and are subject to tolerances due to production and manufacturing. Proper operation can only be guaranteed when using original Elma accessories.

Product Information and Prices



Elmasolvex RM

Ultrasonic cleaning devices



Order numbers and list prices

Elmasolvex	RM
Order number 230 V~	1047806
Order number 115 V~	1055855
List price	4.570,00 €

Scope of delivery

▪ Basket cover + 4 glasses with covers + 4 wave breaker
▪ Operating manual
▪ Power cable

Elmasolvex RM

Product features and functions

▪ TÜV certified explosion safety
▪ Now with 4 cleaning chambers and one drying chamber (fine filter warm air technology)
▪ Fully automatic or alternatively with individually adjustable parameters
▪ Easy-to-maintain design, easy-to-clean housing construction
▪ Maximum personnel safety by connecting the machine to a controlled exhaust air system
▪ Basket rack for 3 baskets, optional sinker holder
▪ Extensive and practical accessories see accessories catalog
▪ Rotation and oscillation methods

Elmasolvex RM

Technical Data - Mechanics

Elmasolvex	RM
Unit ext. dimensions W / D / H (mm)	515 / 542 / 650
Weight (kg)	28
Hot air dryer connection (DN)	75 (passive)
Volume of the media tank (l)	0,6
Chamber suction connection	R 1"

Elmasolvex RM

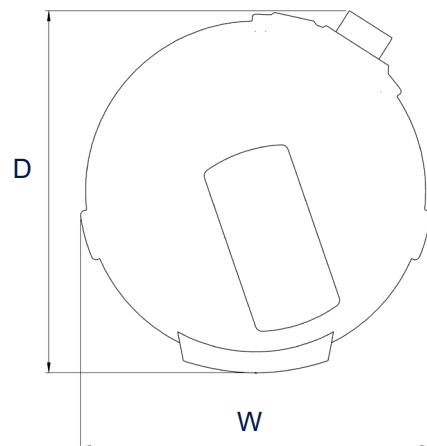
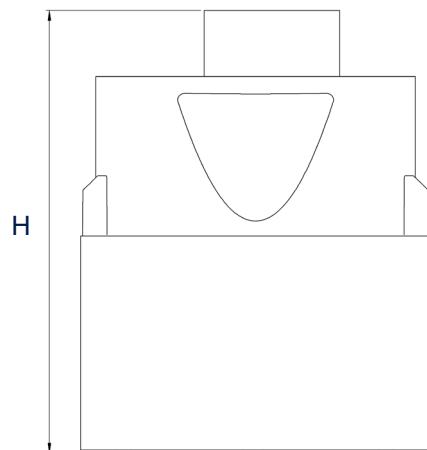
Technical Data - Mechanics

Elmasolvex	RM
Mains voltage (V~)	115 / 230
Mains frequency (Hz)	50 / 60
Power consumption total (W)	260
Power consumption in standby (W)	5
Rotation speed in cleaning position (rpm) Rotation mode (adjustable)	- 800
Change of rotation direction in cleaning program (s) Oscillation mode (adjustable)	0,05 - 1,0
Speed in spin position (rpm) (adjustable)	- 1200
Permissible ambient temperature (°C)	5 - 30

Elmasolvex RM

Dimension definition

Unit outer dimensions



The drawings are merely included as a visualization aid and are not true to scale.

Technical specifications serve as orientation values and are subject to tolerances due to production and manufacturing. Proper operation can only be guaranteed when using original Elma accessories.



Elmasolvex SE

Ultrasonic cleaning devices



Order numbers and list prices

Elmasolvex	SE
Order number 230 V~	1048960
Order number 115 V~	1055851
Order number 100 V~	1093369
List price	2.260,00 €

Scope of delivery

▪ Basket cover + 4 glasses with covers + 4 wave breaker
▪ Operating manual
▪ Power cable

Elmasolvex SE

Product features and functions

▪ TÜV certified explosion safety
▪ Now with 4 cleaning chambers and one drying chamber (fine filter warm air technology)
▪ Manual operation with detents at the working height and above the glass positions
▪ Easy-to-maintain design, easy-to-clean housing construction
▪ Maximum personnel safety by connecting the machine to a controlled exhaust air system
▪ Basket rack for 3 baskets, optional sinker holder
▪ Extensive and practical accessories see accessories catalog
▪ Rotation process

Elmasolvex SE

Technical Data - Mechanics

Elmasolvex	SE
Unit ext. dimensions W / D / H (mm)	502 / 516 / 657
Weight (kg)	19
Hot air dryer connection (DN)	75 (passive)
Volume of the media tank (l)	0,6

Technical Data - Electronics

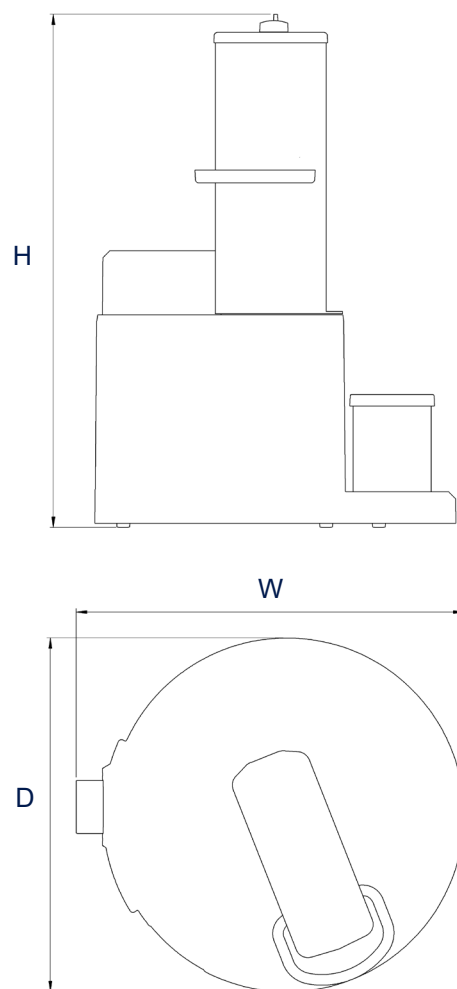
Elmasolvex	SE
Mains voltage (V~)	100 / 115 / 230
Mains frequency (Hz)	50 / 60
Power consumption total (W)	260
Power consumption in standby (W)	10
Speed range in cleaning / rinsing basket position (rpm)	Visually adjustable
Speed range in spinning basket position freely adjustable up to max. (rpm)	1200
Permissible ambient temperature (°C)	5 - 30

Technical specifications serve as orientation values and are subject to tolerances due to production and manufacturing. Proper operation can only be guaranteed when using original Elma accessories.

Elmasolvex SE

Dimension definition

Unit outer dimensions



The drawings are meant as a visualization aid and are not true to scale.


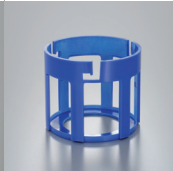

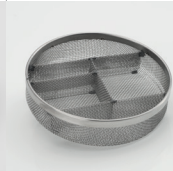




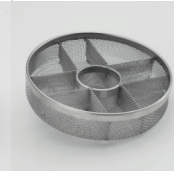

Technical specifications serve as orientation values and are subject to tolerances due to production and manufacturing. Proper operation can only be guaranteed when using original Elma accessories.

Elmasolvex RM / SE Accessories - Basket Set Ø 64

Basket set for parts cleaning

consists of: 1 Basket holder, 1 Basket 1-piece (1 / 3 height), 2 Baskets 5-pieces (1 / 3 height)
1 Miniature basket, 1 Cover for miniature basket und 1 Cover for basket.



	Basket set complete	Basket holder	Basket 1-piece 1 / 3 height	Basket 5-pieces 1 / 3 height	Miniature basket	Cover for Miniature basket	Cover for basket	Basket 4-pieces 1 / 3 height	Basket 9-pieces 1 / 3 height	Basket 1-piece 1 / 1 height
Order number	3000101101	1053071	3000006012	3000006014	3000006017	3000006016	3000006018	3000006013	3000006015	3000009104
List price	138,00 €	23,00 €	21,00 €	40,00 €	13,50 €	17,00 €	13,50 €	35,00 €	62,00 €	40,00 €
Ext. dimensions Dia / H (mm)	70 / 60	70 / 60	64 / 16	64 / 16	21 / 12	20 / 4	64 / 2	64 / 16	64 / 16	64 / 42
Int. dimensions Dia ₁ / H ₁ (mm)	64 / 50	64 / 50	60 / 15	60 / 15	18 / 11	--	--	60 / 15	60 / 15	60 / 41
										

All prices ex works, excluding packaging.

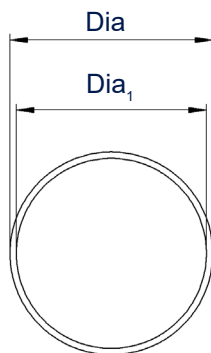
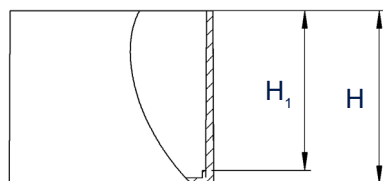
The drawings are meant as a visualization aid and are not true to scale.

Technical specifications serve as orientation values and are subject to tolerances due to production and manufacturing. Proper operation can only be guaranteed when using original Elma devices.

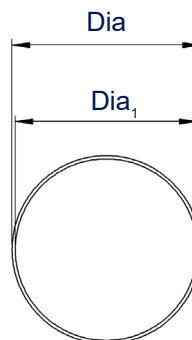
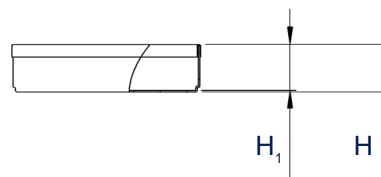
Elmasolvex RM / SE Accessories - Basket Set Ø 64

Dimension definition

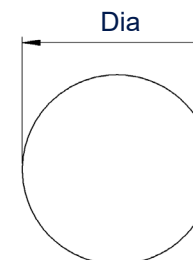
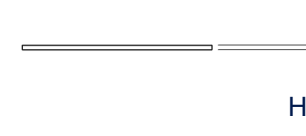
Basket set / Basket holder



Baskets



Covers



The drawings are meant as a visualization aid and are not true to scale.

Technical specifications serve as orientation values and are subject to tolerances due to production and manufacturing. Proper operation can only be guaranteed when using original Elma devices.

Elmasolvex RM / SE Accessories - Jar + Movement Holder



	Jar complete with cover and wave breaker	Jar	Cover for jar	Seal for jar	Wave breaker for jar	Movement holder
Order number	1048418	1096533	1053139	1052559	1048417	3000006038
List price	69,00 €	45,00 €	5,00 €	10,00 €	9,00 €	120,00 €
Ext. dimensions Dia / H (mm)	120 / 160	115 / 155	120 / 20	115 / 12	105 / 95	75 / 60
Int. dimensions Dia _i / H _i (mm)	100 / 140	100 / 145	--	--	100 / --	--
						

All prices ex works, excluding packaging.

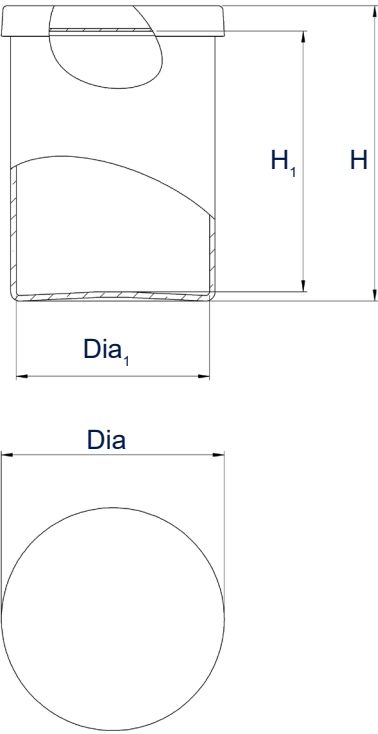
The drawings are meant as a visualization aid and are not true to scale.

Technical specifications serve as orientation values and are subject to tolerances due to production and manufacturing. Proper operation can only be guaranteed when using original Elma devices.

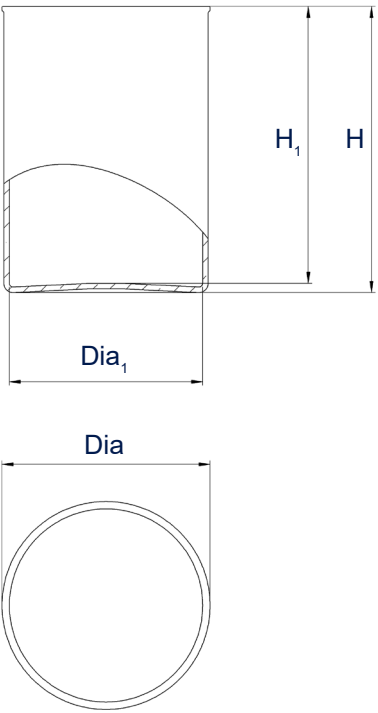
Elmasolvex RM / SE Accessories - Jar

Dimension definition

Jar complete



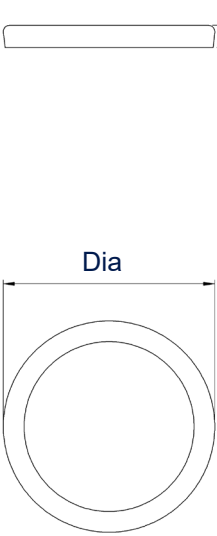
Jar



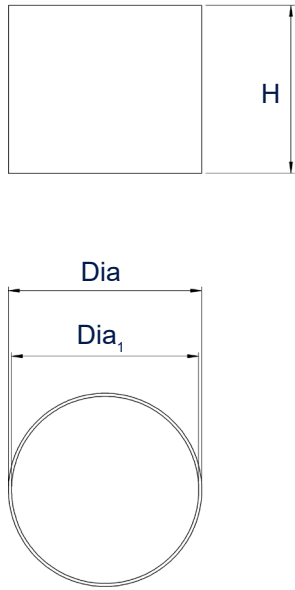
Cover
for jar



Seal
for jar



Wave breaker
for jar

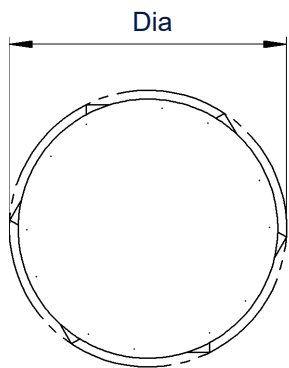
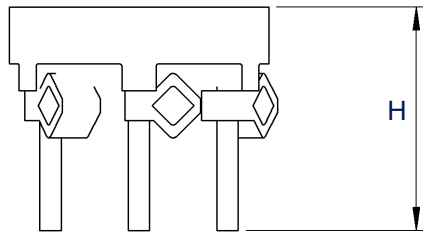


The drawings are meant as a visualization aid and are not true to scale.

Technical specifications serve as orientation values and are subject to tolerances due to production and manufacturing. Proper operation can only be guaranteed when using original Elma devices.

Elmasolvex RM / SE Accessories - Movement Holder

Dimension definition



The drawings are meant as a visualization aid and are not true to scale.

Technical specifications serve as orientation values and are subject to tolerances due to production and manufacturing. Proper operation can only be guaranteed when using original Elma devices.

Product Information and Prices



Elmasolvex VA Accessories - Basket Set Ø 64 mm

Basket set for parts cleaning

consists of: 1 Basket holder, 1 Basket adapter, 1 Cover for basket adapter, 1 Basket 1-piece (1 / 3 height)
2 Baskets 5-pieces (1 / 3 height), 1 Miniature basket, 1 Cover for miniature basket and
1 Cover for basket.



	Basket set	Basket holder	Basket adapter	Cover Basket holder	Basket 1-piece 1 / 3 height	Basket 5-pieces 1 / 3 height	Miniature basket	Cover for Miniature basket	Cover for basket	Basket 4-pieces 1 / 3 height	Basket 9-pieces 1 / 3 height	Basket 1-piece 1 / 1 height
Order number	1052351	1052348	1052352	1053496	3000006012	3000006014	3000006017	3000006016	3000006018	3000006013	3000006015	3000009104
List price	260,00 €	22,50 €	105,00 €	38,00 €	21,00 €	40,00 €	13,50 €	17,00 €	13,50 €	35,00 €	62,00 €	40,00 €
Ext. dimensions Dia / H (mm)	75 / 85	70 / 60	60 / 20	75 / 35	64 / 16	64 / 16	21 / 12	20 / 4	64 / 2	64 / 16	64 / 16	64 / 42
Int. dimensions Dia ₁ / H ₁ (mm)	60 / 40	64 / 50	--	--	60 / 15	60 / 15	18 / 11	--	--	60 / 15	60 / 15	60 / 41

All prices ex works, excluding packaging.

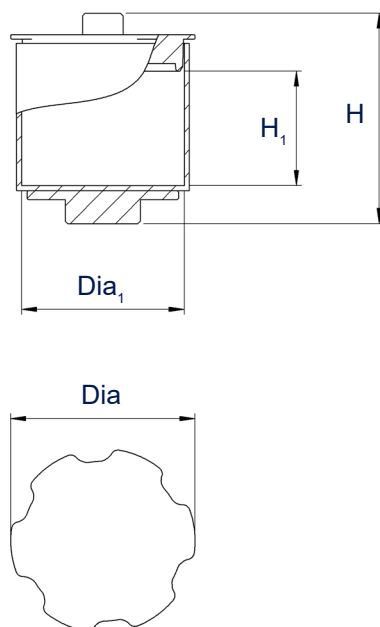
The drawings are meant as a visualization aid and are not true to scale.

Technical specifications serve as orientation values and are subject to tolerances due to production and manufacturing. Proper operation can only be guaranteed when using original Elma devices.

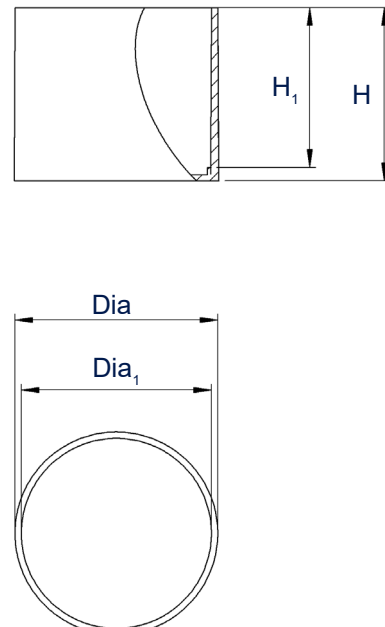
Elmasolvex VA Accessories - Basket Set Ø 64 mm

Dimension definition

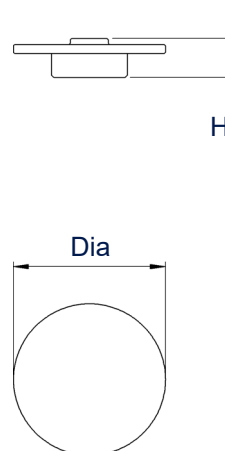
Basket set



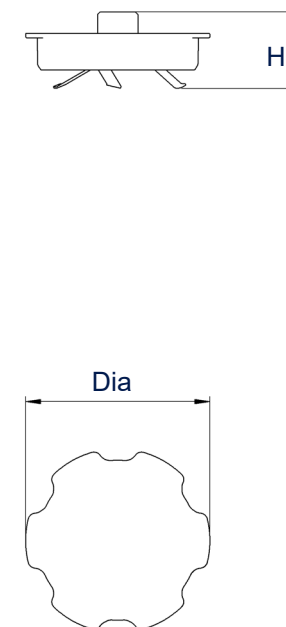
Basket holder



Basket adapter



Cover
Basket holder



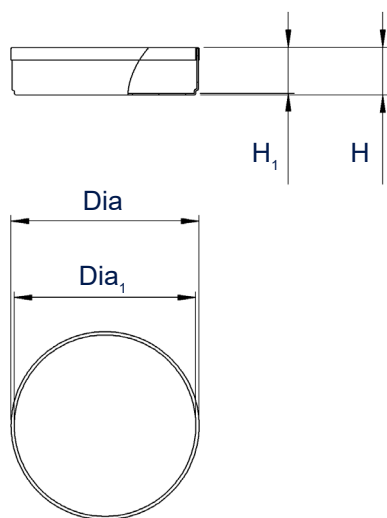
The drawings are meant as a visualization aid and are not true to scale.

Technical specifications serve as orientation values and are subject to tolerances due to production and manufacturing. Proper operation can only be guaranteed when using original Elma devices.

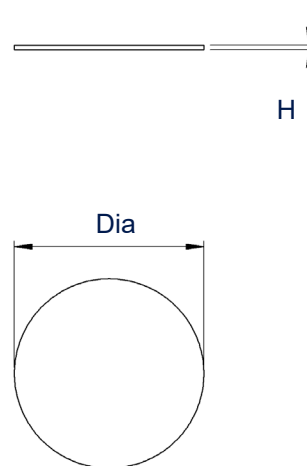
Elmasolvex VA Accessories - Basket Set Ø 64 mm

Dimension definition

Baskets



Covers



The drawings are meant as a visualization aid and are not true to scale.

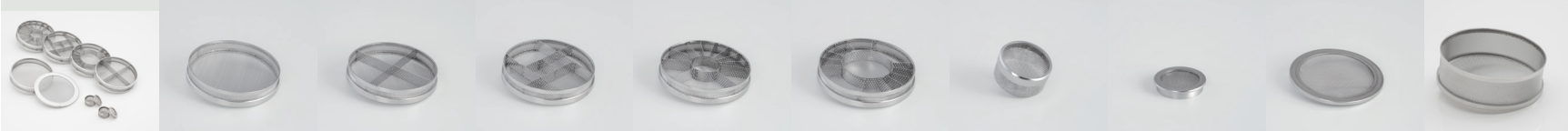
Technical specifications serve as orientation values and are subject to tolerances due to production and manufacturing. Proper operation can only be guaranteed when using original Elma devices.

Elmasolvex VA Accessories - Basket Set Ø 80 mm

Basket set for parts cleaning

consists of: 1 Basket 1-piece, 1 Basket 4-pieces, 1 Basket 8-pieces, 1 Basket 11-pieces (round small),
1 Basket 11-pieces (round big), 2 Miniature basket, 2 Cover for miniature basket and 1 Cover for basket.



	Basket set	Basket 1-piece	Basket 4-pieces	Basket 8-pieces	Basket 11-pieces round small	Basket 11-pieces round big	Miniature basket	Cover for Miniature basket	Cover for basket	Basket 1-piece double height
Order number stainless steel	1055836	1052338	1052336	1052337	1052334	1052335	1052720	3000006016	1052332	1052333
List price stainless steel	963,00 €	127,00 €	160,00 €	204,00 €	225,00 €	230,00 €	12,70 €	17,00 €	63,00 €	149,00 €
Order number RILSAN	1055837	1053834	1053832	1053833	1053830	1053831	--	--	--	1053829
List price RILSAN	1.062,00 €	138,00 €	176,00 €	205,00 €	242,00 €	242,00 €	--	--	--	165,00 €
Ext. dimensions Dia / H (mm)	81 / 65	81 / 14	81 / 14	81 / 14	81 / 14	81 / 14	21 / 12	20 / 4	81 / 3	81 / 26
Int. dimensions Dia ₁ / H ₁ (mm)	--	75 / 11	75 / 11	75 / 11	75 / 11	75 / 11	18 / 11	--	--	75 / 23
										

All prices ex works, excluding packaging.

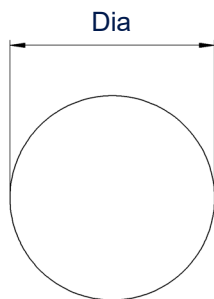
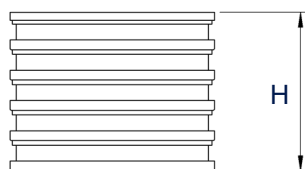
The drawings are meant as a visualization aid and are not true to scale.

Technical specifications serve as orientation values and are subject to tolerances due to production and manufacturing. Proper operation can only be guaranteed when using original Elma devices.

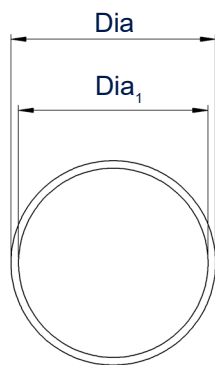
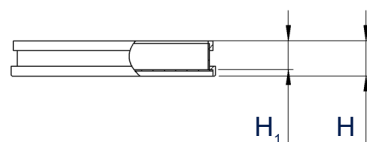
Elmasolvex VA Accessories - Basket Set Ø 80 mm

Dimension definition

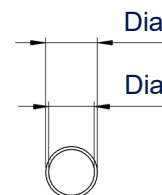
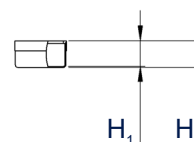
Basket set



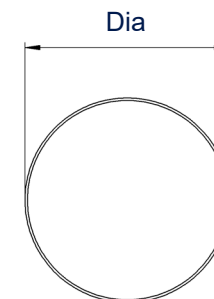
Baskets



Miniature basket



Covers



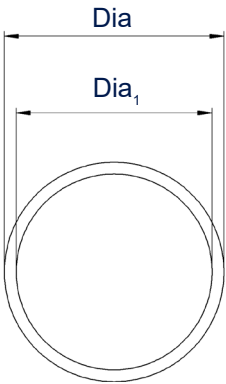
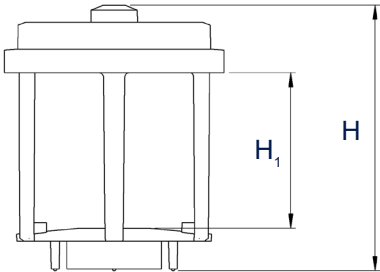
The drawings are meant as a visualization aid and are not true to scale.

Technical specifications serve as orientation values and are subject to tolerances due to production and manufacturing. Proper operation can only be guaranteed when using original Elma devices.

Elmasolvex VA Accessories - Basket Holder



Dimension definition



	Basket holder
Order number	1053905
List price	210,00 €
Ext. dimensions Dia / H (mm)	95 / 115
Int. dimensions Dia ₁ / H ₁ (mm)	80 / 65

Elmasolvex VA Accessories - Movement Holder



	Movement Holder for 12 watch movements, vertical	Movement Holder for 12 watch movements, horizontal
Order number	1054631	1046733
List price	149,00 €	230,00 €
Ext. dimensions Dia / H (mm)	81 / 125	82 / 115



All prices ex works, excluding packaging.
The drawings are meant as a visualization aid and are not true to scale.
Technical specifications serve as orientation values and are subject to tolerances due to production and manufacturing. Proper operation can only be guaranteed when using original Elma devices.

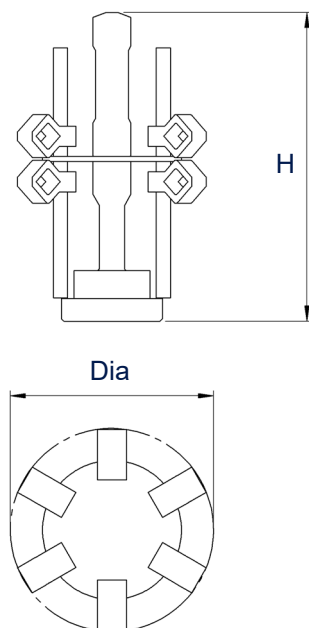
Elma Schmidbauer GmbH · Gottlieb-Daimler-Str. 17 · 78224 Singen (Germany) · Tel. +49 7731 882-0 · Fax +49 7731 882-266 · www.elma-ultrasonic.com

Elmasolvex VA Accessories - Movement Holder

Dimension definition

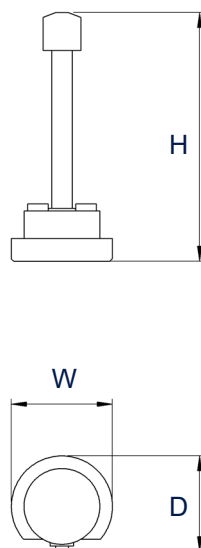
Movement Holder

for 12 watch movements, vertical



Adapter

for 12 watch movements, hanging



The drawings are meant as a visualization aid and are not true to scale.

Technical specifications serve as orientation values and are subject to tolerances due to production and manufacturing. Proper operation can only be guaranteed when using original Elma devices.

Elmasolvex VA Accessories - Activated Carbon

Activated carbon unit
bestehend aus: 1 Activated Carbon, 2 Stickers, 1 Replacement filter, 1 PTFE tape und 1 Funnel



	Activated carbon unit	Refill set Activated Carbon	Replacement filter (2x)	Replacement filter (4x)
Order number	1053376	1053820	1102461	1101408
List price	1.133,00 €	58,00 €	40,50 €	39,50 €
Ext. dimensions W / D / H (mm)	450 / 260 / 380	--	--	--

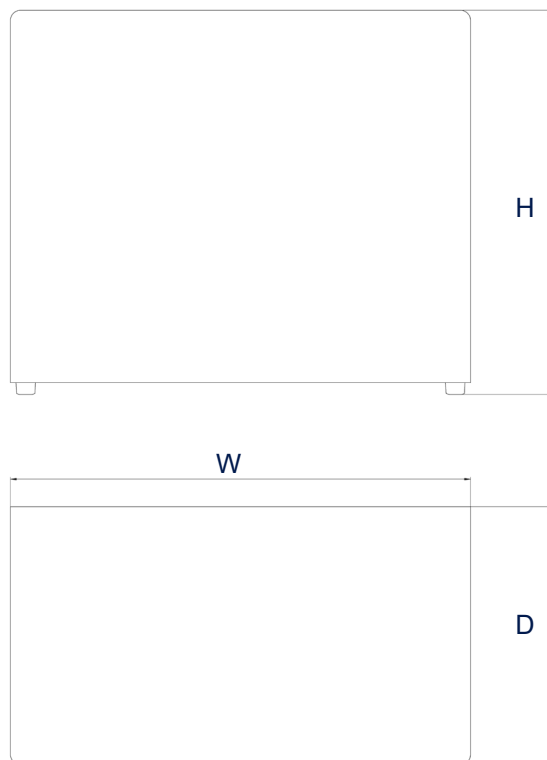


All prices ex works, excluding packaging.
The drawings are meant as a visualization aid and are not true to scale.
Technical specifications serve as orientation values and are subject to tolerances due to production and manufacturing. Proper operation can only be guaranteed when using original Elma devices.

Elmasolvex VA Accessories - Activated Carbon

Dimension definition

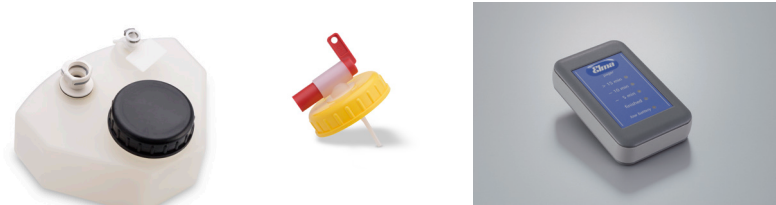
Activated carbon unit



The drawings are meant as a visualization aid and are not true to scale.

Technical specifications serve as orientation values and are subject to tolerances due to production and manufacturing. Proper operation can only be guaranteed when using original Elma devices.

Elmasolvex VA Accessories - Others



	Media tank	Drain tap for media tank	Pager mobile remaining time display
Order number	1038653	1090708	1047991
List price	175,00 €	15,50 €	324,00 €
Ext. dimensions W / D / H (mm)	250 / 200 / 125	115 / 110 / 105	70 / 25 / 110
Capacity (L)	2,5	--	--



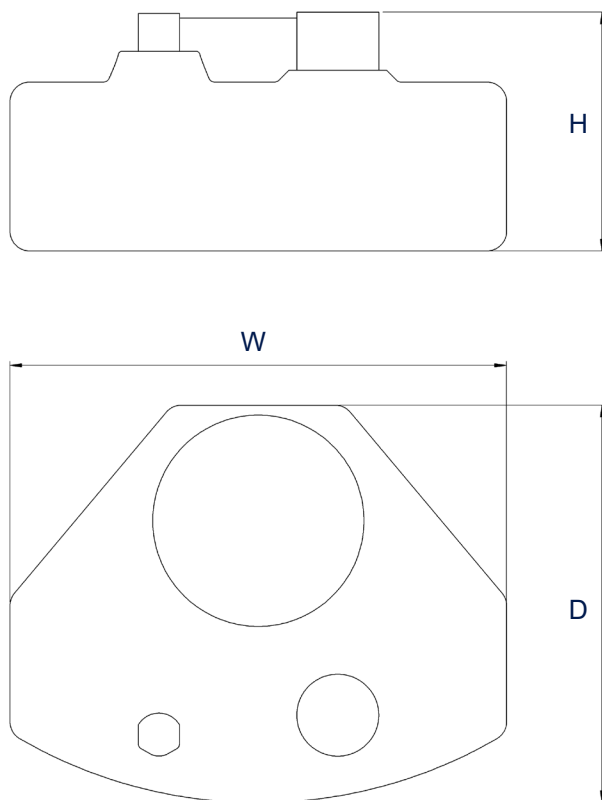
All prices ex works, excluding packaging.
The drawings are meant as a visualization aid and are not true to scale.
Technical specifications serve as orientation values and are subject to tolerances due to production and manufacturing. Proper operation can only be guaranteed when using original Elma devices.

Elma Schmidbauer GmbH · Gottlieb-Daimler-Str. 17 · 78224 Singen (Germany) · Tel. +49 7731 882-0 · Fax +49 7731 882-266 · www.elma-ultrasonic.com

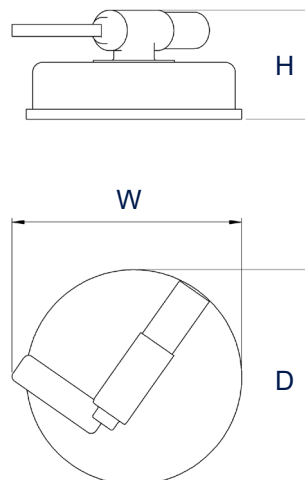
Elmasolvex VA Accessories - Others

Dimension definition

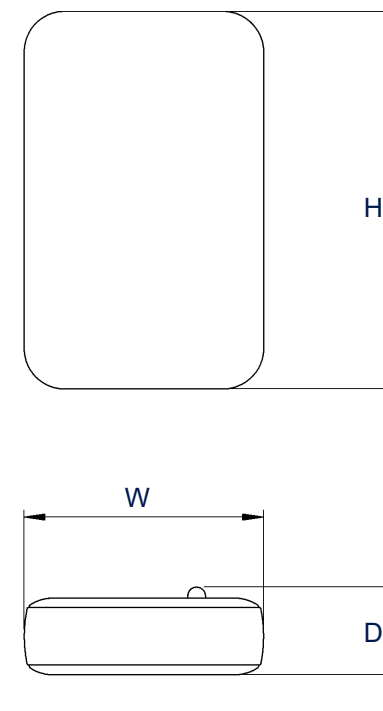
Media tank



Drain tap for media tank



Pager mobile remaining time display



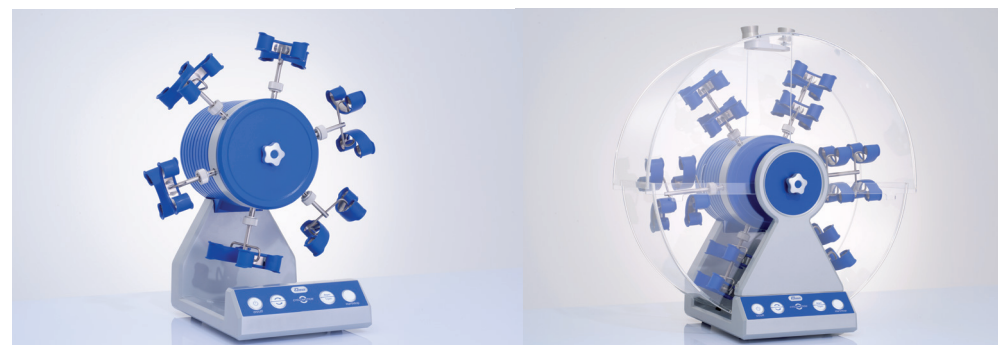
The drawings are meant as a visualization aid and are not true to scale.

Technical specifications serve as orientation values and are subject to tolerances due to production and manufacturing. Proper operation can only be guaranteed when using original Elma devices.

Cyclomotion

Watchwinder

- Cyclomotion: without protective cover
- Cyclomotion pro: with protective cover



Order numbers and list prices

Cyclomotion	Without clip	With clip for 12 watches	With clip for 24 watches
Order number 110 - 240 V~	1035171	1035171 + 6 x 1035190	1035171 + 6 x 1035192
List price	1.390,00 €	1.630,00 €	1.810,00 €
Cyclomotion pro			
Order number 110 - 240 V~	1035170	1035170 + 6 x 1035190	1035170 + 6 x 1035192
List price	2.430,00 €	2.670,00 €	2.850,00 €

Scope of delivery

- Operating manual
- Power supply unit

All prices ex works, excluding packaging.

Technical specifications serve as orientation values and are subject to tolerances due to production and manufacturing. Proper operation can only be guaranteed when using original Elma accessories.

Cyclomotion / Cyclomotion pro

Product features and functions

- | |
|---|
| ▪ Powerful, low-noise motor with integrated slipping clutch and holding torque (in standby mode) |
| ▪ Speed adjustable: 1 rpm or 4 rpm for endurance tests and fast winding of watches |
| ▪ Direction of rotation adjustable: clockwise, counterclockwise and clockwise / anticlockwise by changing the direction of rotation |
| ▪ Individually selectable bracket combination enables simultaneous winding of movements wound on one side as well as on both sides |
| ▪ Cyclomotion pro with lockable protector hood, provides additional protection against dust and mechanical impact |

Cyclomotion / Cyclomotion pro

Technical Data - Mechanics

Cyclomotion	Without clip	With clip for 12 watches	With clip for 24 watches
Unit ext. dimensions Dia / D / H (mm)	250 / 410 / 330	400 / 485 / 330	470 / 520 / 330
Weight (kg)	11	11,5	12
Max. load per watch holder (g)	--	180	180
Cyclomotion pro			
Unit ext. dimensions Dia / D / H (mm)	555 / 595 / 330		
Weight	16	16,5	17
Max. load per watch holder (g)	--	180	180

Technical Data - Electronics

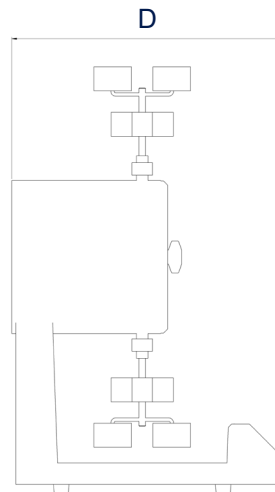
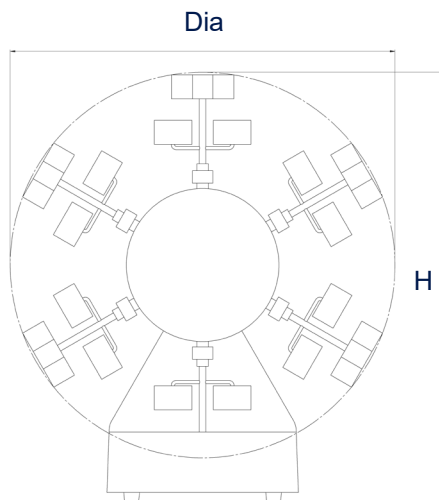
	Cyclomotion	Cyclomotion Pro
Mains voltage (V~)	100 - 240	
Mains frequency (Hz)	50 / 60	
Power consumption total (W)	24	
Spindle head rotation per min	s1 / 4	
Rotation of the holding bracket per min	4,5 / 18	

Technical specifications serve as orientation values and are subject to tolerances due to production and manufacturing. Proper operation can only be guaranteed when using original Elma accessories.

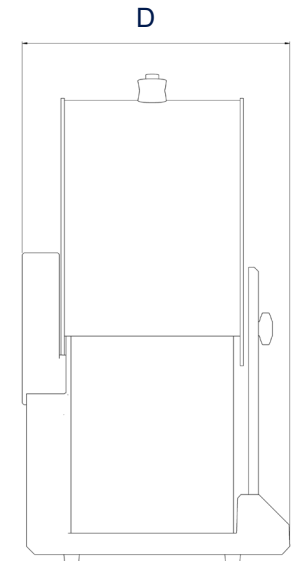
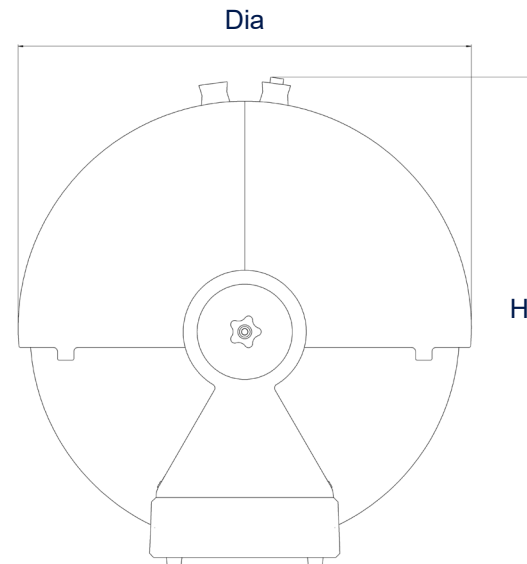
Cyclomotion / Cyclomotion pro

Dimension definition

Cyclomotion



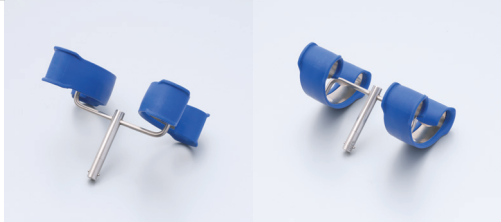
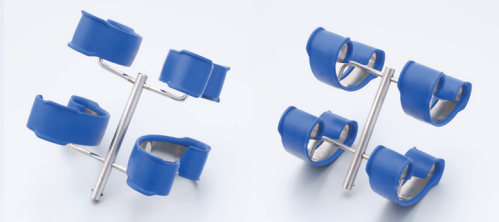



Cyclomotion Pro



The drawings are meant as a visualization aid and are not true to scale.

Technical specifications serve as orientation values and are subject to tolerances due to production and manufacturing. Proper operation can only be guaranteed when using original Elma accessories.

Watchwinder accessories - Cyclomotion (pro)

	Watch clip for 2 watches with straps		Watch clip for 4 watches with straps		Industrial clip for 4 watches without straps	Watch box for 4 watches without straps	Wall mounting device
Order number	1035190	1035359	1035192	1035360	1035361	1053528	1035701
List price	40,00 €	40,00 €	70,00 €	70,00 €	74,00 €	120,00 €	70,00 €
Ext. dimensions W / D / H (mm)	130 / - / 85	130 / - / 125	130 / - / 75	130 / - / 115	80 / - / 120	145 / 135 / 40	80 / 90 / 145
Max. watch diameter (mm)	--	--	--	--	--	43,0	--
Max. load per watch holder (g)	2 x 180 = 360	2 x 180 = 360	4 x 180 = 720	4 x 180 = 720	4 x 180 = 720	4 x 180 = 720	--
With left / right elevator		•		•			
							

All prices ex works, excluding packaging.

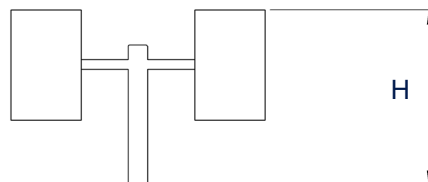
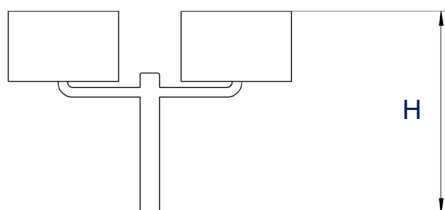
The drawings are meant as a visualization aid and are not true to scale.

Technical specifications serve as orientation values and are subject to tolerances due to production and manufacturing. Proper operation can only be guaranteed when using original Elma devices.

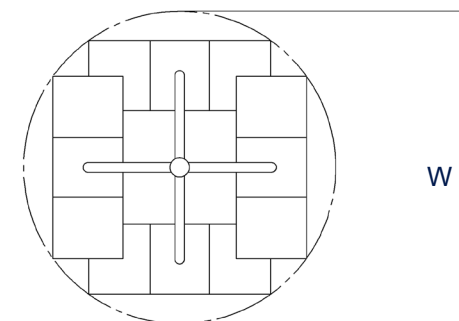
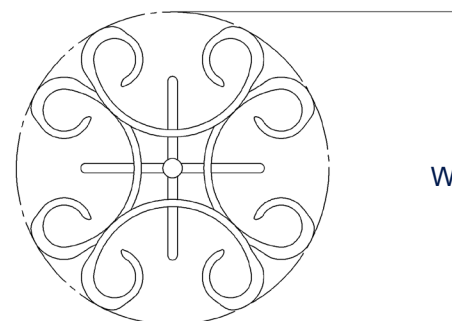
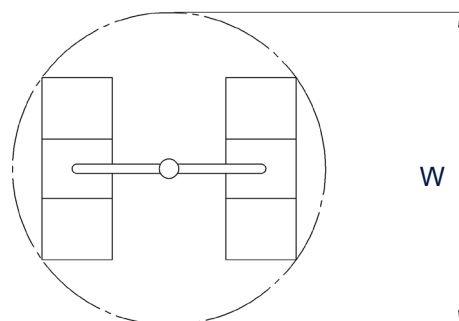
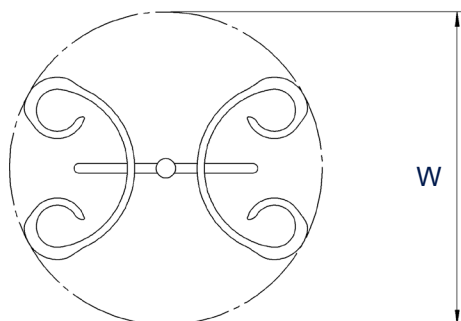
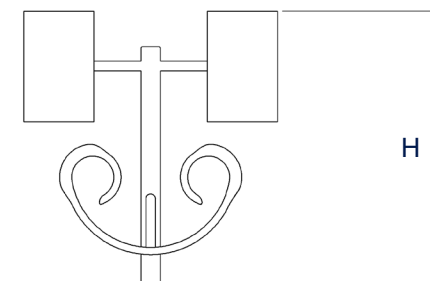
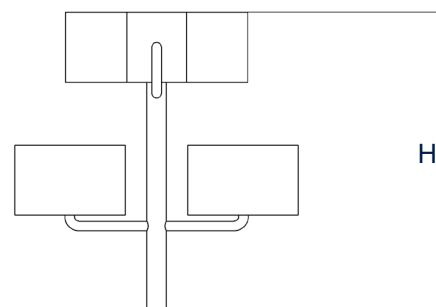
Watchwinder accessories - Cyclomotion (pro)

Dimension definition

Watch clip
for 2 watches with straps



Watch clip
for 4 watches with straps



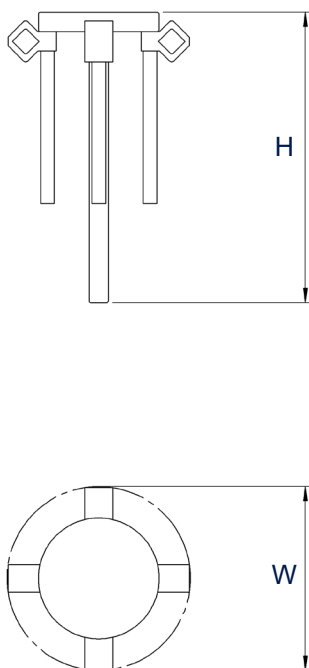
The drawings are meant as a visualization aid and are not true to scale.

Technical specifications serve as orientation values and are subject to tolerances due to production and manufacturing. Proper operation can only be guaranteed when using original Elma devices.

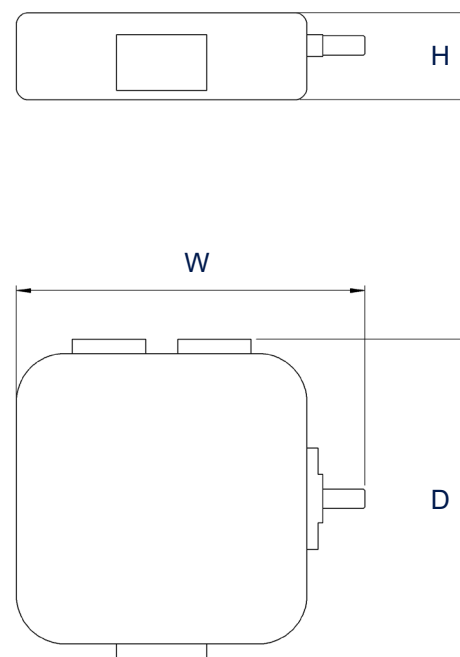
Watchwinder accessories - Cyclomotion (pro)

Dimension definition

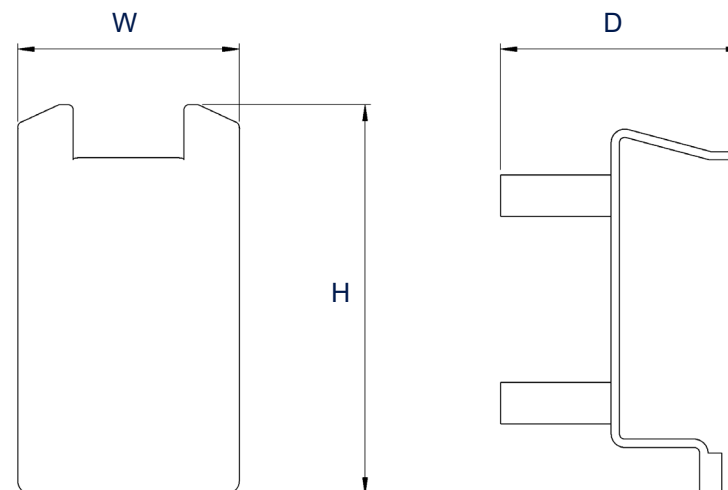
Industrial clip
for 4 watches without straps



Watch box
for 4 watches without straps



Wall mounting device



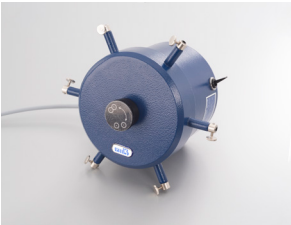
The drawings are meant as a visualization aid and are not true to scale.

Technical specifications serve as orientation values and are subject to tolerances due to production and manufacturing. Proper operation can only be guaranteed when using original Elma devices.

Cyclomat

Watchwinder

- Circulation regulating device „the artificial wrist“ for control and winding of the automatic watch
- The watch takes any position possible on the wrist on the device
- Device with 6 clips (or 12 clips) for table installation or wall mounting



Order numbers and list prices

	6 clips - without stand	12 clips - with stand
Order number 220 - 240 V~	3340003000	3340000000
list price	750,00 €	1.090,00 €

Cyclomat

Technical Data - Mechanics

	6 clips - without stand	12 clips - with stand
Unit ext. dimensions Dia / D / H (mm)	380 / 145	380 / 420 / 220
Weight (kg)	1,9	2,0
Max. load per watch holder (g)	180	

Technical Data - Electronics

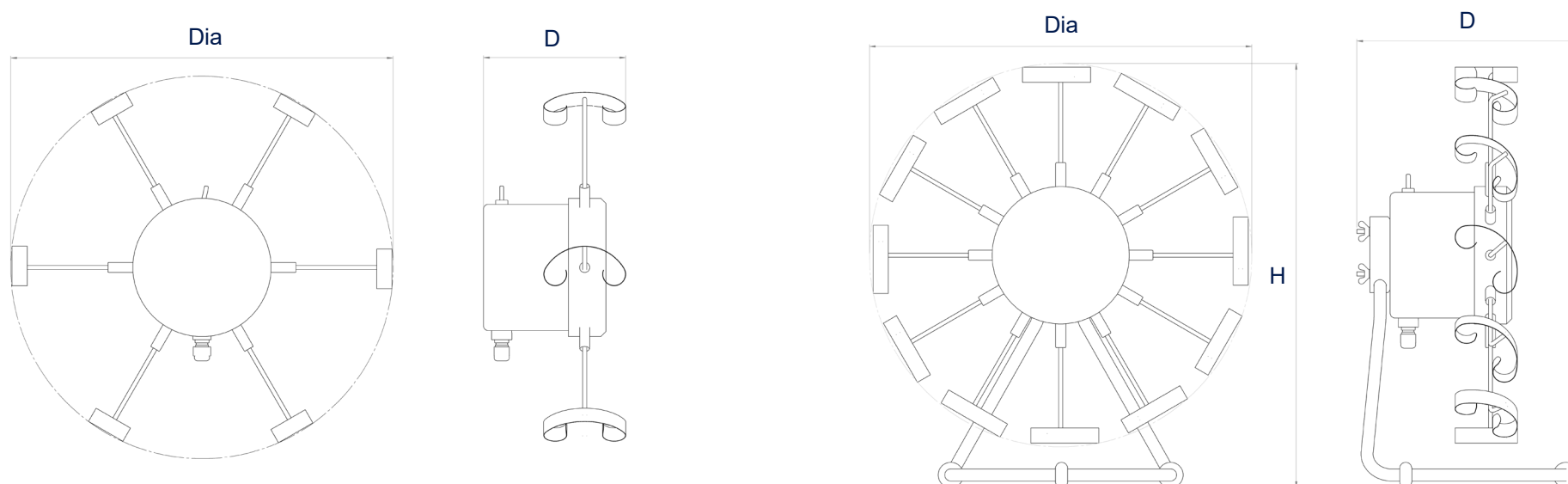
	6 clips - without stand	12 clips - with stand
Mains voltage (V~)	100-120 / 220-240	
Mains frequency (Hz)	50 / 60	
Power consumption total (W)	2	
Spindle head rotation per min	4	
Rotation of the holding bracket per min	20	

Technical specifications serve as orientation values and are subject to tolerances due to production and manufacturing. Proper operation can only be guaranteed when using original Elma accessories.

Cyclomat

Dimension definition




Unit outer dimensions



The drawings are meant as a visualization aid and are not true to scale.

Technical specifications serve as orientation values and are subject to tolerances due to production and manufacturing. Proper operation can only be guaranteed when using original Elma accessories.

Watchwinder accessories - Cyclomat

	Watch clip with shaft for watches with straps	Additional watch clip without shaft for watches with straps	Industrial clip with shaft for watches without straps	Stand with support plate
Order number	3000006066	3000006067	3000006068	3000006070
List price	13,50 €	12,00 €	54,00 €	99,00 €
Ext. dimensions W / D / H (mm)	85 / 40 / 105	85 / 40 / 15	80 / - / 120	245 / 220 / 270
Max. load per watch holder (g)	180	180	4x180 = 720	--
				

All prices ex works, excluding packaging.

The drawings are meant as a visualization aid and are not true to scale.

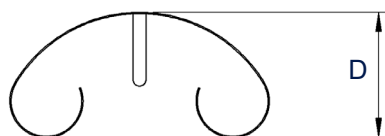
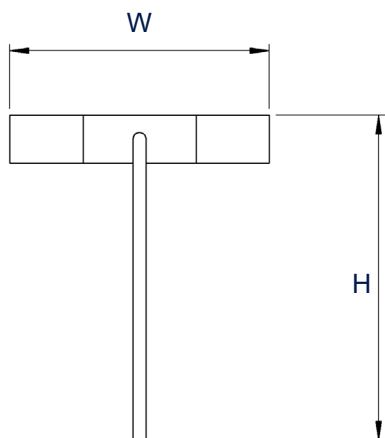
Technical specifications serve as orientation values and are subject to tolerances due to production and manufacturing. Proper operation can only be guaranteed when using original Elma devices.

Watchwinder accessories - Cyclomat

Dimension definition

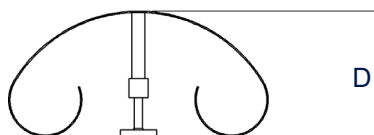
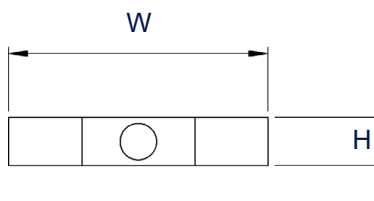
Watch clip

with shaft for watches with straps



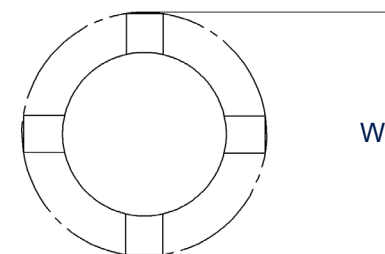
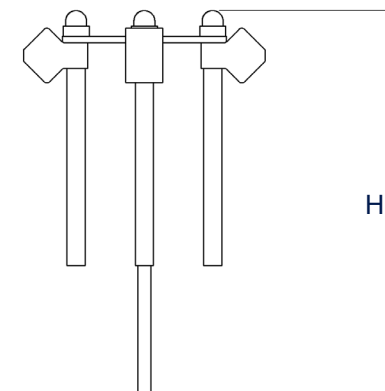
Additional watch clip

without shaft for watches with straps



Industrial clip

with shaft for watches without straps



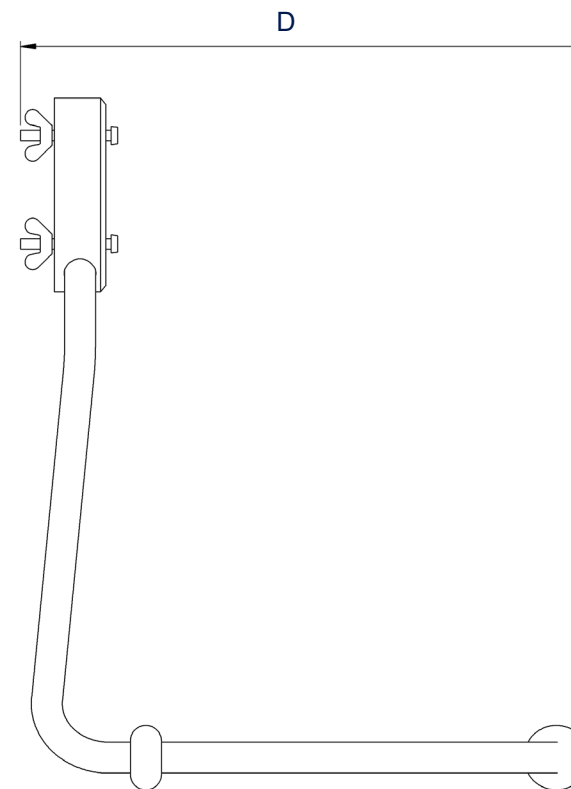
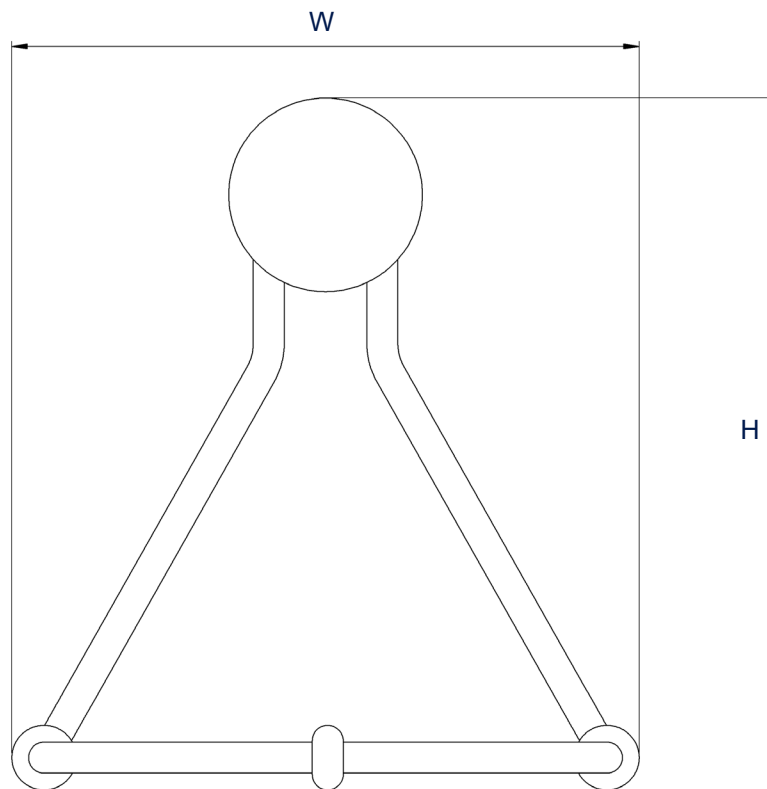
The drawings are meant as a visualization aid and are not true to scale.

Technical specifications serve as orientation values and are subject to tolerances due to production and manufacturing. Proper operation can only be guaranteed when using original Elma devices.

Watchwinder accessories - Cyclomat

Dimension definition

Stand
with support plate



The drawings are meant as a visualization aid and are not true to scale.

Technical specifications serve as orientation values and are subject to tolerances due to production and manufacturing. Proper operation can only be guaranteed when using original Elma devices.

Antimag

Demagnetizer

- Electronic demagnetizer for watches* and precision tools. Very easy handling: operation by only one operating key.
- Simplest handling due to one-button operation.
- The accuracy of watches is influenced by magnetism. After each revision and cleaning, the mechanical movement should be demagnetized either completely or in a disassembled state. The balance spring in particular may have become magnetized over time, especially in older movements. Harmonious oscillation of the hairspring is then no longer possible: the watch runs inaccurately. Tools can also be a „source of danger“ and transmit magnetism and should be demagnetized before use on watch movements
- With the push of a button and in milliseconds, Elma Antimag demagnetizes complete watches*, disassembled movement parts, housings and tools. Small parts should be placed in a sealed plastic bag on the field. This prevents small parts from jumping away from the working field.
- * Note: Electronic quartz watches must of course not be demagnetized.



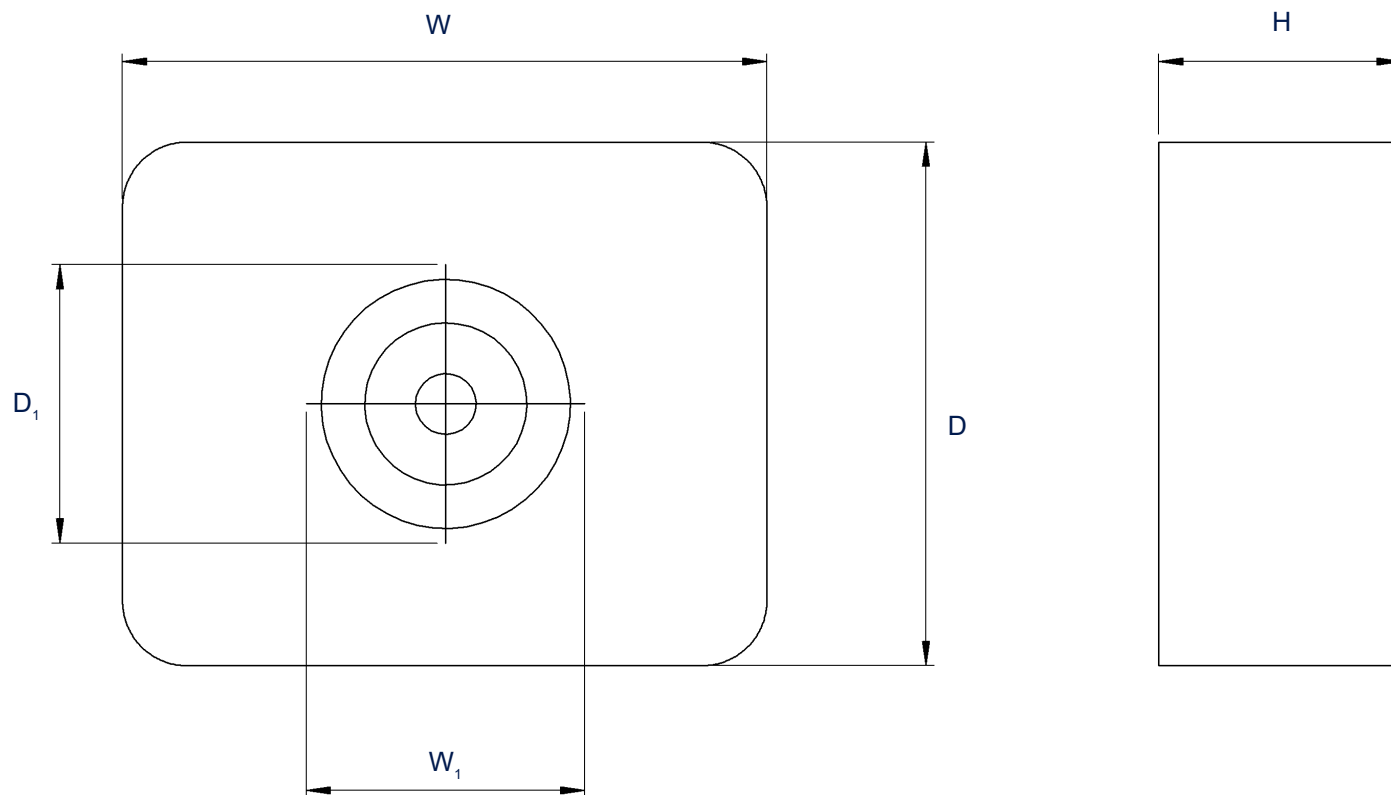
	Antimag
Order number 220-240V~	1012014
Order number 100-120V~	1012964
List price	210,00 €
Ext. dimensions W / D / H (mm)	160 / 130 / 60
Dimensions demagnetization field W ₁ / D ₁ (mm)	60 / 60
Weight (kg)	1,0
Mains voltage (V~)	100 - 120 / 220 - 240
Mains frequency (Hz)	50 / 60

All prices ex works, excluding packaging.

Technical specifications serve as orientation values and are subject to tolerances due to production and manufacturing. Proper operation can only be guaranteed when using original Elma accessories.

Antimag

Dimension definition



The drawings are meant as a visualization aid and are not true to scale.

Technical specifications serve as orientation values and are subject to tolerances due to production and manufacturing. Proper operation can only be guaranteed when using original Elma accessories.

Leak Controller

Waterproof tester

- Check for leaks – no risk involved:
Unit for the checking for leaks in wrist watches. The easy operation of the unit guarantees correct testing after exchange of the battery even by apprentices. At the same time, the machine is a reliable and maintenance-free watch testing unit for the professional watchmaker.
- Functioning of the unit:
By means of the integrated vacuum pump, the machine creates a difference of pressure between inside and outside of the watch. The measuring gauge is sensitive to any movement of the watch case down to 1 / 1000 mm and instantly detects any pressure compensation in which case the watch has a leak. If the difference of pressure remains the same, the watch is watertight. The machine has a mechanical design and even allows the testing of low-price watches with easily deformable watch-glasses (no risk of breaking).



	Leak Controller
Order number	1084100
List price	980,00 €
Ext. dimensions W / D / H (mm)	155 / 170 / 315
Weight (kg)	3,5
Mains voltage (V~)	100 - 240
Mains frequency (Hz)	50 / 60
Power consumption total (W)	60

Scope of delivery

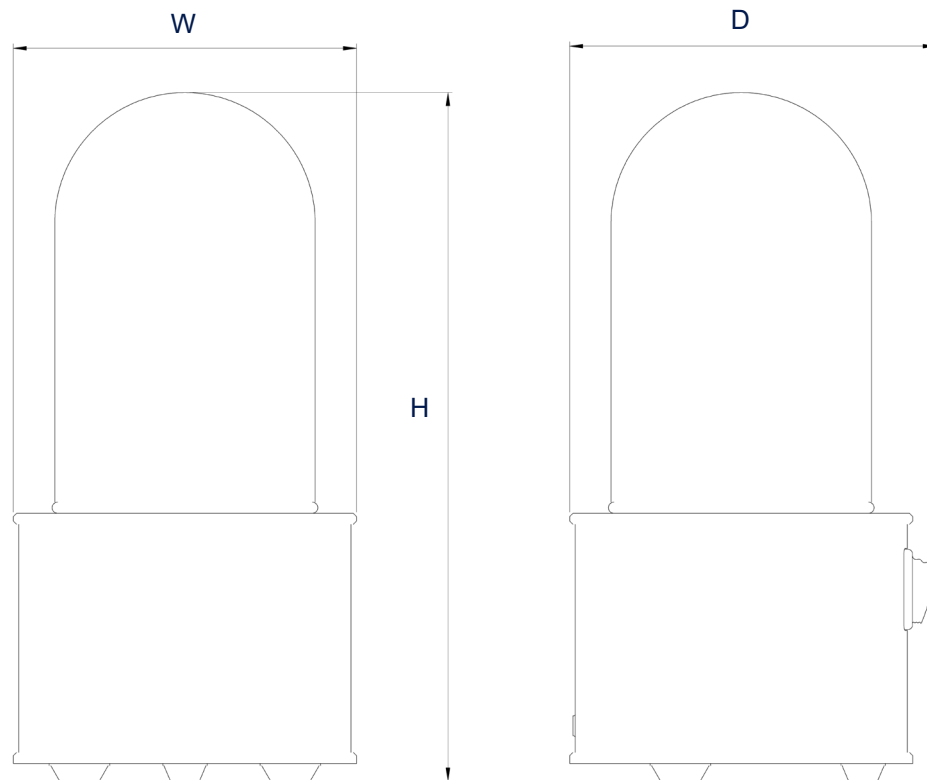
- Operating manual
- Plug-in power supply (1.5m length)

All prices ex works, excluding packaging.

Technical specifications serve as orientation values and are subject to tolerances due to production and manufacturing. Proper operation can only be guaranteed when using original Elma accessories.

Leak Controller

Dimension definition



The drawings are meant as a visualization aid and are not true to scale.

Technical specifications serve as orientation values and are subject to tolerances due to production and manufacturing. Proper operation can only be guaranteed when using original Elma accessories.